

# ADA Americans with Disabilities Act

## **Fact 3: Rental mats, when properly placed and maintained, enhance accessibility.**

The former Assistant Attorney General also stated that "if movable floor mats impede access for people with disabilities, they may need to be moved or removed.

It is important that all mats be placed correctly so that they do not create a trip hazard. Our Professional Mat Service Program helps ensure the correct placement of your mats. Packerland's quality control insures that only safe mats in good repair are placed on your floors.

Together, we can make our country safer and more accessible for all Americans.

Architects, designers and owners of existing and new facilities can be assured that our company is aware of the ADA legislation, and that our mats meet or exceed the recommendations and intent of the ADA.

We hope this information has cleared up any confusion you may have experienced over the use of our professional mat service with regards to the ADA.



Packerland's mats have been certified slip-resistant by the National Floor Safety Institute. [www.nfsi.org](http://www.nfsi.org)

## **How This Bill Impacts Your Packerland Mat Service**

The Americans with Disabilities Act of 1992 may raise questions regarding the use of mats in public places where entrances and exits must be kept free of hazards.

We would like to present you with some facts regarding our Professional Mat Service and how our mats comply with the requirements set by the ADA.



[info@Packerland.net](mailto:info@Packerland.net)  
1-800-472-9339



# ADA

## Americans with Disabilities Act

### Section 4.5.1

“Ground and floor surfaces along accessible routes and in accessible rooms and spaces including floors, walks, ramps, stairs, and curb ramps, shall be stable, firm, slip-resistant, and shall comply with 4.5”

### Section 4.5.2

“...Changes in level between 1/4 inch and 1/2 inch shall be beveled with a slope no greater than 1:2...”

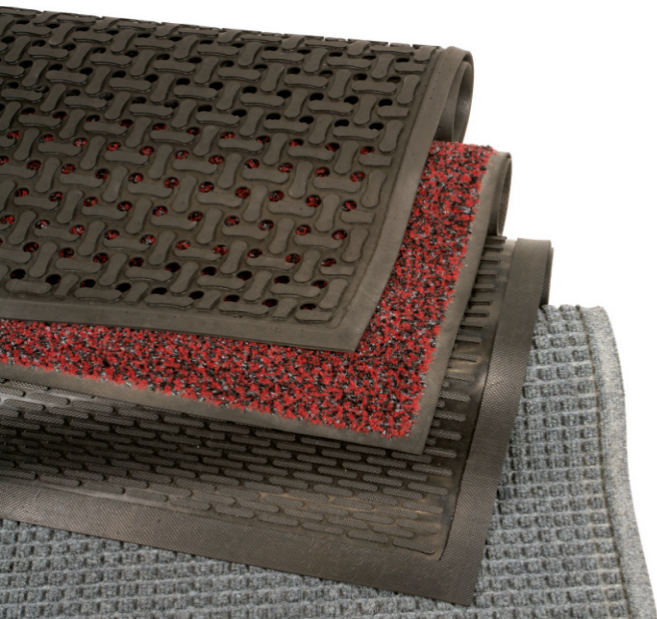
### Section 4.5.3

“...Maximum pile thickness (height) shall be 1/2 inch... If carpet or carpet tile is used on a ground or floor surface, then it shall be securely attached... Exposed edges of carpet shall be fastened to floor surfaces and have trim along the entire length of the exposed edge”

#### **Fact 1: Our Professional Mat Service provides mats that have a stable, firm, skid-resistant surface.**

By design, our mats meet the change in level, pile height and Static Coefficient of Friction requirements of the ADA.

Our mats help collect and contain the dirt, grit, and moisture that could otherwise contribute to slip and fall accidents.



#### **Fact 2: Rental mats are not carpets**

Section 4.5.3 of the ADA may raise questions regarding the use of rental mats in public access areas. We would like to give you the facts surrounding the topic.

It is the opinion of former Assistant Attorney General W. Lee Rawls, United States Department of Justice, that “Rental mats are not considered carpeting, and therefore, are not subject to the requirements” of ADA Section 4.5.3

- Attorneys for the two leading textile rental associations, the Uniform & Textile Service Association and the Textile Rental Service Association, also concluded that it is not necessary to permanently affix rental mats to a floor surface.

There are many purchased mats that do not meet the requirements of the ADA, and it is recommended that these be removed:

- Carpet Remnants
- Unbeveled or unbacked matting
- Rippled vinyl-backed mats
- Scatter rugs



**Packerland Rent-A-Mat, Inc.**  
A Wisconsin Family-Owned Company

www.Packerland.net  
(800) 472-9339  
(262) 781-6265 FAX  
info@packerland.net